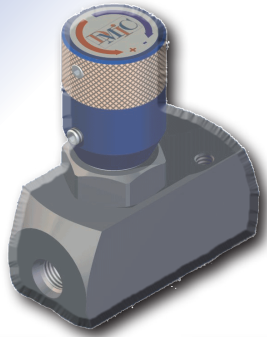


FCHH FLOW CONTROLS

Unidirectional flow with Built-In Check Valve ~ ¼" to 2+" Carbon/ Stainless Steel construction for working pressures to 10,000 PSI



DMIC's newly designed **FCHH** series brings full 10,000 PSI operating pressure to the masses in Carbon/Stainless Steel construction

- Integral 5 PSI poppet check Valve provides free return flow
- Offered from ¼" to 2+" port sizes
- Standard Panel mounting holes
- Fully reparable design and configurable
- Available with alternate needle pitches and profiles
- Fast delivery of Viton and EPR sealing

FCHH	Nominal Size	Port Thread	Performance Data				Dimensions (inches)										Stainless Steel	
			Flow GPM ¹	Metered Direction		Free Flow		A	B	C	D	E	F	G	H	J (UNF)	F	B
				Orifice Area (sq.in.)	Effective C _v	Orifice Area (sq.in.)	Effective C _v											
FCHH-0250N	¼"	¼" NPTF	2.2 GPM	0.012	0.280	0.240	0.536	2.87	1.38	1.69	2.75	1.18	1.25	1.00	0.88	¼	1.57	1.63
FCHH-0250B		¼" BSPP																
FCHH-0250S		#4 SAE																
FCHH-0250IU		12mm ISO6149																
FCHH-0375N	¾"	¾" NPTF	6 GPM	0.028	0.630	0.620	1.415	2.94	1.50	2.00	3.13	1.18	1.50	1.25	0.88	¼	1.73	1.75
FCHH-0375B		¾" BSPP																
FCHH-0375S		#6 SAE																
FCHH-0375IU		16mm ISO6149																
FCHH-0500N	½"	½" NPTF	15 GPM	0.049	1.120	0.166	3.792	3.03	1.75	2.47	3.75	1.18	1.75	1.25	0.88	¼	1.72	2.00
FCHH-0500B		½" BSPP																
FCHH-0500S		#8 SAE																
FCHH-0750N	¾"	¾" NPTF	25 GPM	0.110	2.520	0.332	7.572	3.75	1.75	3.04	4.73	1.63	2.25	1.00	1.25	¼		
FCHH-0750B		¾" BSPP																
FCHH-0750S		#12 SAE																
FCHH-1000N	1"	1" NPTF	40 GPM	0.196	4.481	0.541	12.345	3.91	2.00	3.53	5.25	1.63	2.50	1.25	1.25	¾		
FCHH-1000B		1" BSPP																
FCHH-1000S		#16 SAE																
FCHH-1250N	1 ¼"	1 ¼" NPTF	70 GPM	0.307	7.001	0.908	20.71	4.51	2.75	4.25	6.25	1.63	3.25	1.50	1.50	¾		
FCHH-1250B		1 ¼" BSPP																
FCHH-1250S		#20 SAE																
FCHH-1500N	1 ½"	1 ½" NPTF	100 GPM	0.442	10.082	1.330	30.29	6.35	3.25	4.88	7.25	3.00	4.00	2.00	2.00	½		
FCHH-1500B		1 ½" BSPP																
FCHH-1500S		#24 SAE																
FCHH-2000N	2"	2" NPTF	150 GPM	0.785	17.92	2.582	58.91	6.84	4.00	6.13	9.00	3.00	4.75	2.25	2.00	½		
FCHH-2000B		2" BSPP																
FCHH-2000S		#32 SAE																

NOTES: (1) Typical flows quoted in U.S. GPM, using 100 SUS Petroleum Based Fluid at 100°



FCHH FLOW CONTROLS

FCHH - 0500 S - 1 1 4 1

Nominal Size
Expressed in 1/1000" units
Example: 0375= $\frac{3}{8}$ ", 1 1/2=1500

Inlet Port Thread

Standard US/Canada	
N	NPT
S	SAE ORB
Metric Standard	
B	BSPP
Optional Threads (Call DMIC)	
T	BSPT

Body Material

1	Carbon Steel
2	Stainless Steel

Poppet & Spring Material

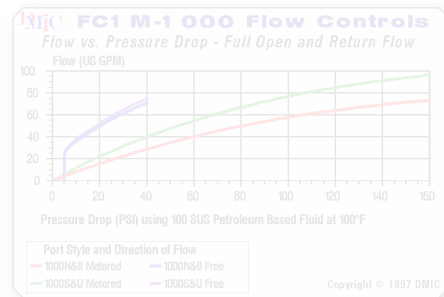
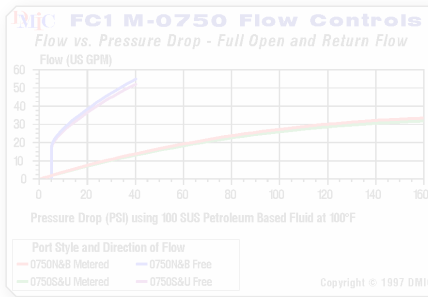
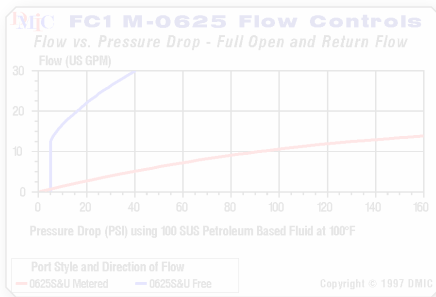
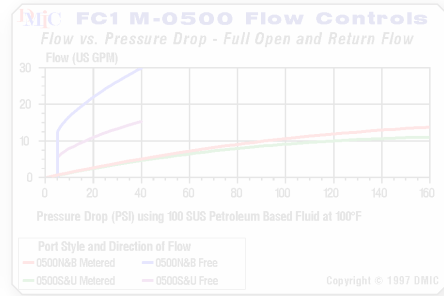
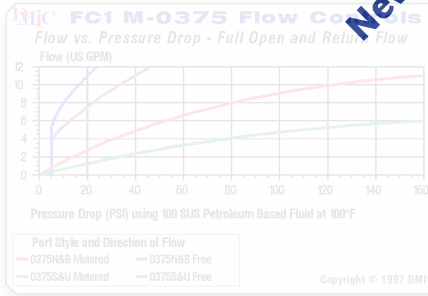
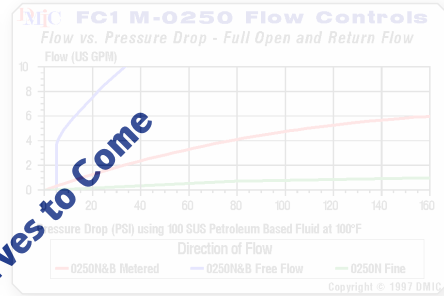
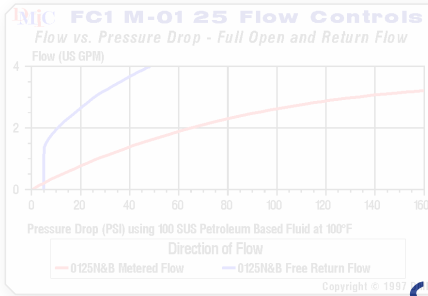
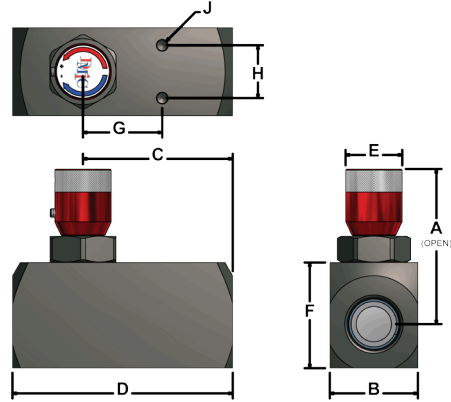
Code	Description
1	Carbon Steel
2	Stainless Steel

Knob Material

Code	Description
4	Aluminum (standard)
2	Stainless Steel*
* Stainless Steel knob not color coded	

O-Ring Seals

Code	Description
1	Buna-N
2	EPR
3	Viton
4	Teflon
5	Chemraz



New Curves to Come

Due to our policy of continual product improvement, the specifications in this catalog may change without notice. When designing by spec, please request a certified print.

